

ROLLECO

Product Sheet

ADVANTAGES OF THE ROLLECO:

- › Reliable, simple and lightweight
- › Quick and easy to assemble
- › Sold with double padded bag: provides protection and easy transport

HEXIS PRODUCTS RECOMMENDED FOR THE GRAPHICS:

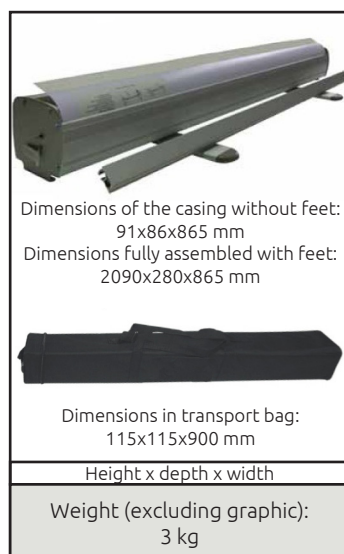
- › JT300M1
- › POPPRIMO
- › POP190ECOS
- › FRONT5M1
- › POP200ECOS



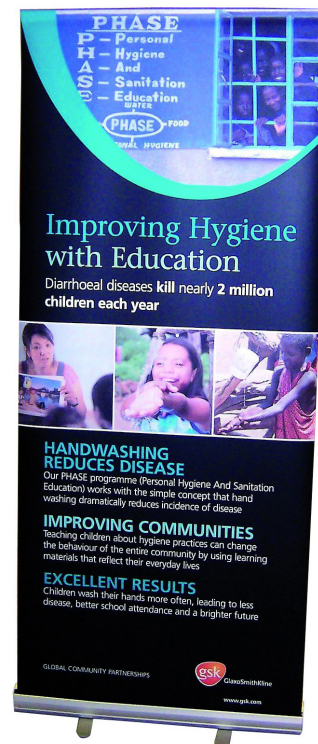
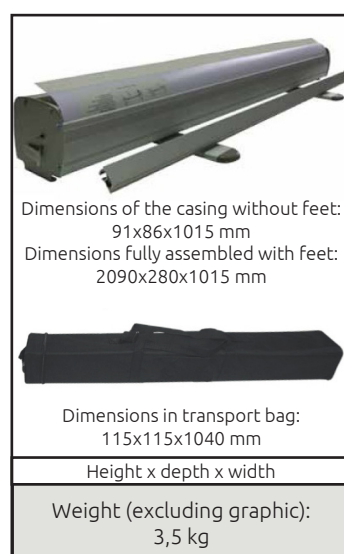
DIMENSIONS OF THE PRINTED GRAPHICS:

- › Width: 85 cm / 34.5 in (ROLLECO85) et 100 cm / 39.4 in (ROLLECO100)
- › Height: 220 cm/87 in of which 20 cm/ 8 in are in the casing

ROLLECO85



ROLLECO100



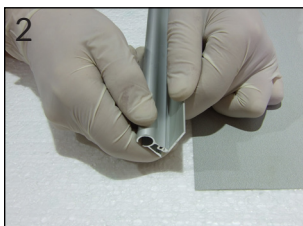
ROLLECO Assembly

1



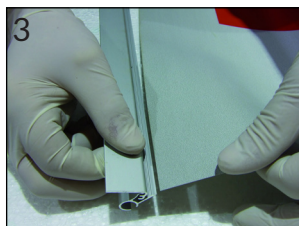
The ROLLECO consists of a steel casing, a non-telescopic pole and a hanger

2



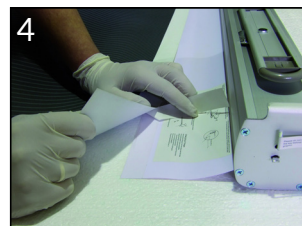
Open the hanger

3



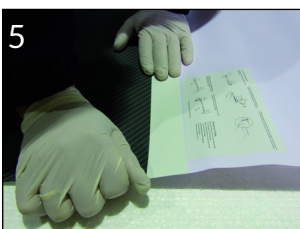
Clip the top of the graphic in the hanger

4



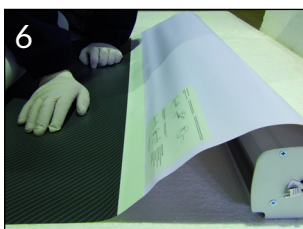
Partly expose the double-sided tape and start applying the bottom end of the graphic

5



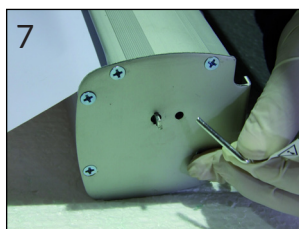
Continue applying the graphic until the full width is applied

6



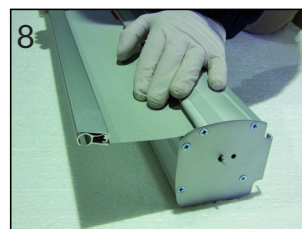
Once the graphic is applied to the tape, firmly press down over the full width to ensure proper adhesion

7



Remove the pin to pull the graphic into the casing. Be careful to hold the graphic and let it roll up smoothly

8



Leave the graphic to slide completely into the casing

9



Fit the pole into the casing

10



Pull the graphic out of the casing while holding the pole

11



Completely unroll the graphic and fix it to the pole

12



Gently pull the graphic towards the top and reinsert the pin