

PRODUCT BULLETIN

APPLICATION GUIDE Retroreflective safety film kits **SECURIKIT**

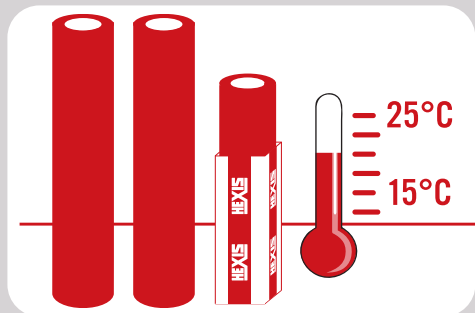
REQUIRED EQUIPMENT

- › 1 KIT of marking strips adapted to the vehicle to be covered
- › ProTech® SHAMPCARV2 car body shampoo
- › Liquids for the cleaning of application surfaces:
 - › SHAGREMOV
 - › SHAGCLEAN
- › PLASKIT squeegee
- › SHAGMAGNET magnets or masking tape
- › SHAGCUT liner cutting tool
- › PISTHERMIQ heat gun
- › PISTLASER3 laser thermometer
- › SHAGRELOAD® cleaning agents

STORE YOUR FILMS UNDER GOOD CONDITIONS

Keep the films away from all major sources of heat (radiators and heaters, direct exposure to sunlight, etc.)

Shelf life: The shelf life of this film is 2 years when stored in its original packaging at a temperature ranging from 15 °C to 25 °C (+59 °F to +77 °F) with relative humidity between 30 % and 70 %.



FEATURES

Class A and Class B retroreflective film kits are intended for application to vehicle bodies. Each kit is specifically pre-cut to the shape and size of the different vehicle models.

PREPARING YOUR APPLICATION SURFACE

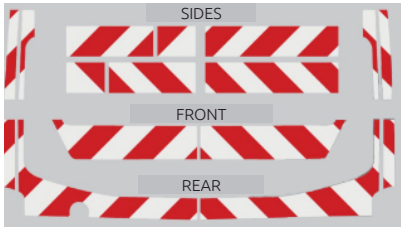
The retroreflective films of the SECURIKIT KITS are intended for application to vehicle bodies. The HEXIS films must be applied to clean, dry, smooth, non-porous surfaces that are free from any traces of oil, grease, wax, silicone or other contaminants. To avoid unexpected outcomes, always assume that every substrate is dirty and needs to be cleaned (cf. chapter 3).

Do not forget to carry out a preliminary trial on a small surface to check that the substrate remains undamaged.

For further technical information, please refer to the data sheets available on the "Professionals" pages on our website www.hexis-graphics.com.

CONTENTS

1. RECOMMENDATIONS:.....	2
2. PRELIMINARY TEST ON FLAT SURFACES:.....	2
2.1. Preliminary inspection of the substrate:.....	2
2.2. Paint tear-off test:.....	2
3. CLEANING:.....	2
3.1. Clean and soiled surface appearance:.....	2
3.2. Heavily soiled surface appearance:.....	2
4. FILM APPLICATION:.....	3
5. CUTS AND FINISHINGS:.....	4
5.1. Cuts:.....	4
5.2. Finishings:.....	5
6. CLEANING AND MAINTENANCE OF THE SECURIKIT:.....	5
7. REMOVAL PROCEDURE:.....	5



1. RECOMMENDATIONS:

- › The SECURIKIT films are intended for application to car bodyworks.
- › The optimal adhesion of the SECURIKIT range films is achieved after 24 hours of contact.

2. PRELIMINARY TEST ON FLAT SURFACES:

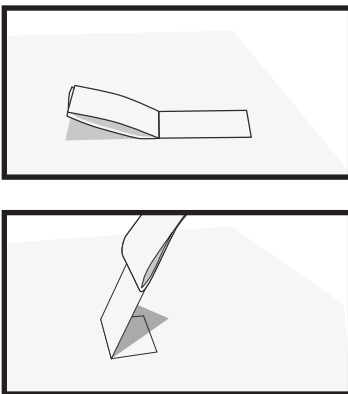
Before any application, the installer must first inspect the substrate and the paint to which the film will be applied.

The installer and the customer are responsible for the suitability evaluation of the target surface to be covered.

2.1. Preliminary inspection of the substrate:

- › Any fresh new paint must be dried for at least 7 days at 25 °C (77 °F) in order to degas completely. A degassing test must be carried out before applying the film.
- › Any old, powdery or flaky paint must be sanded and renewed before application and must undergo a tear-off test.

2.2. Paint tear-off test:



Using a Tesa® 50110 adhesive tape, apply it to a surface of 2.5 cm x 5 cm (1 in. x 2 in.) plus some non-applied overhang material for easier removal. Fold and tear it off with one quick pull perpendicular to the substrate surface. No traces of paint should remain on the ripped-off adhesive tape. Repeat this process in several places.

- > *On request, HEXIS can provide you with a Tesa® adhesive tape in 2.5 cm x 5 cm (1 in. x 2 in.) size. HEXIS cannot be held liable for any damage to the substrate following the execution of this test.*

3. CLEANING:

You must clean the substrate before performing the application. It should always be assumed that the substrate is contaminated with dirt. Some residues or soiling may not be visible; however, they may impact the adhesion of the film.

- ⚠ *Before using any cleaning liquids or chemicals, please refer to the Technical Data Sheets and Safety Data Sheets available for download on our website www.hexis-graphics.com.*

3.1. Clean and soiled surface appearance:

Wash the vehicle with the SHAMPCARV2 vehicle body shampoo, then carry out a final cleaning using the SHAGCLEAN product.

3.2. Heavily soiled surface appearance:

Wash the vehicle with the SHAMPCARV2 vehicle body shampoo, then use the SHAGREMOV product.

- ⚠ *Use the SHAGREMOV product in a ventilated area. Wear protective gloves and goggles.*

SHAMPCARV2
Concentrated vehicle
shampoo



Prior to treatment, run a compatibility test on a small, inconspicuous area of the substrate to be treated. Certain plastic materials may be damaged by SHAGREMOV.

- › Spray the SHAGREMOV product on the dirty surface and spread it out using a dry cloth.
- › Wait for a few minutes. Then spray the SHAGREMOV product again and wipe the surface dry with a clean cloth or squeegee.
- › When the substrate is clean and dry, carry out a final cleaning with the SHAGCLEAN product.

SHAGREMOV

Powerful cleaning agent



SHAGCLEAN

Cleaning and degreasing finishing agent




4. FILM APPLICATION:

Before any application of the retroreflective film, make sure that all surfaces are clean (cf. paragraph 3), paying particular attention to critical areas such as corners and vehicle body edges.

The ideal application temperature ranges from 15 °C to 25 °C (59 °F to 77 °F) (minimum 7 °C (45 °F)) and must be respected for both the ambient and the substrate temperatures.

To simplify the application, it is possible to moisten the surface by spraying a mixture of water and mild detergent such as washing-up liquid (3 % maximum) in order to facilitate the sliding of the film to be positioned. This operation will limit the formation of bubbles or creases during application.

 *In a very humid environment, the film may require more time to adhere to the substrate than in normal conditions.*

- › Make a slit in the protective liner with the SHAGCUT about 20 cm from the film edge where the application will start. (FIG. 01)



Figure 01

- › Position the retroreflective film tape on the bodywork and fix it using a masking tape strip or HEXMAGNET magnets. (FIG. 02)



Figure 02



Figure 03

- › Remove the shortest piece of the protective liner. (FIG. 03)



Figure 04

- › Start applying the film to the bodywork using the PLASKIT squeegee. Form a 45°-angle with the squeegee and apply the film from the centre towards the edges in order to push the air out. (FIG. 04)
- › Continue to peel off the remaining liner and then continue to apply the film until the film application is completed.
- › Squeegee the whole film surface by firmly pressing on the borders.



Figure 05

- › Then proceed with the application of the other retroreflective film strips of the SECURIKIT kit. (FIG. 05)

Note: The retroreflective film strips must be joined edge-to-edge only.

5. CUTS AND FINISHINGS:

5.1. Cuts:

If the retroreflective film strips are applied to two adjacent body sheets, it will be necessary to cut the film where the sheets meet.



Figure 06

- › Press on the contours of the area with your finger.
- › Use a cutter with a new blade to carry out the cut.
- › The cutter blade must be placed against the edge of the adjacent part, make sure you always go along the same line, with the cutter blade leant against the edge and inclined towards the outside. (FIG. 06)

- › To finish, run the squeegee over the cut edge, applying the remaining film to the part where the bodywork is thinnest. (FIG. 07)

5.2. Finishings:

To finish the application, run again the squeegee over the edges of the retroreflective film strips, applying strong pressure.

⚠ Caution: In the case of wet application, it is recommended to firmly press on the edges of the film in order to properly expel the application liquid.

6. CLEANING AND MAINTENANCE OF THE SECURIKIT:

For a complementary cleaning of the SECURIKIT films, use the SHAGRELOAD product with a clean microfiber cloth.

- › Spray directly onto the surface to be cleaned (\pm 40 cm x 40 cm / 15 in. x 15 in.).
- › Wipe with a microfiber cloth before the product dries.

The retroreflective films can be cleaned in any conventional automatic car wash, using cleaning products and detergents used for professional maintenance of vehicles and advertising equipment.

Nevertheless, exercise care when cleaning with high-pressure cleaners: apply medium water pressure at a minimum distance of 50 cm (20 in.) and a maximum water temperature of 35 °C (95 °F).

⚠ Caution: Do not wash the film within the first 48 hours following its application as this can affect the adhesion, which may result in the film peeling off.

⚠ Caution: Solvents and corrosive detergents are forbidden.

⚠ Caution: HEXIS are not liable for any adhesive films cleaned with unspecified additives from cleaning stations.

⚠ Caution: Car washes: The additive products and the condition of the rotating brushes may impair the adhesion of the graphics or films. It is commonly admitted that after 10 car washes, the polyurethane paint becomes streaked; we are not accountable for these mechanical effects that may affect the film appearance.

HEXIS tip: Always carry out a test on a small area before cleaning the entire covered surface.


7. REMOVAL PROCEDURE:

The films of the SECURIKIT range feature a reinforced permanent adhesive; therefore, their removal could be difficult. Nevertheless, by following the instructions below, the removal will be relatively easy.


- › Using a heat gun, start from a corner and heat the film to a temperature of around 45 °C (113 °F). Check the temperature of the film using the PISTLASER3 laser thermometer.
- › Lift the corner, then slowly peel off the film. The film should form a 70- to 80-degree angle with the substrate.




Figure 07

 *A more or less wide angle will cause the film to break more easily.*

- ▶ Always proceed gradually by heating small areas while carefully removing the film so as to limit the risk of leaving any adhesive on the substrate or tearing off the film.
- ▶ Continue to carefully heat and slowly peel off the film until it is completely removed while keeping a watchful eye on the heat applied, on the pulling angle of the film, and the pulling speed.
- ▶ If any adhesive remains on the substrate after removal of the film, spray SHAGREMOV liquid on the surfaces with adhesive traces. Let it work for a few seconds, then gently wipe it dry with a clean microfibre cloth. Repeat the operation until the adhesive is completely removed.
- ▶ Finish the cleaning by spraying SHAGCLEAN liquid on the previously treated surfaces and wipe it dry with a clean microfiber cloth.

 *Prior to treatment, run a compatibility test on a small, inconspicuous area of the substrate to be treated. Certain plastic materials, body panel seals, etc. may be damaged by the cleaning products. Take the necessary precautions to protect the most delicate parts before performing the clean-up. HEXIS are not liable for damages and degradations caused to the substrate by using incompatible products.*

 *Before using any of our liquids, please refer to the technical data sheets available on our website at www.hexis-graphics.com.*

For further technical information, please refer to the Technical Data Sheets available for free download from our website www.hexis-graphics.com on the "Professionals" pages.

Due to the great variety of substrates and the growing number of new applications, the installer must check the suitability of the medium for each application. All the published information does not however constitute a binding guarantee. The seller cannot be held liable for indirectly related damages and assumes no liability for claims that are higher than the replacement value of the purchased product. All specifications are subject to potential changes without prior notice. Our specifications are automatically updated on our website www.hexis-graphics.com.

